

circular

range: [3.9e-03, 8.2e-01]

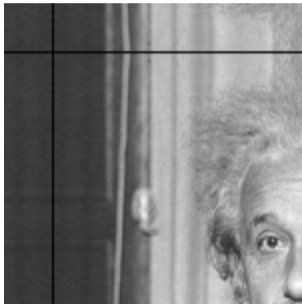
dims: [150, 150] * 1



reflect

range: [3.9e-03, 8.2e-01]

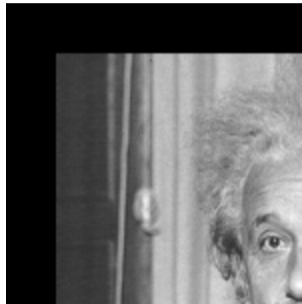
dims: [150, 150] * 1



replicate

range: [3.9e-03, 8.2e-01]

dims: [150, 150] * 1



constant

range: [0.0e+00, 8.2e-01]

dims: [150, 150] * 1

