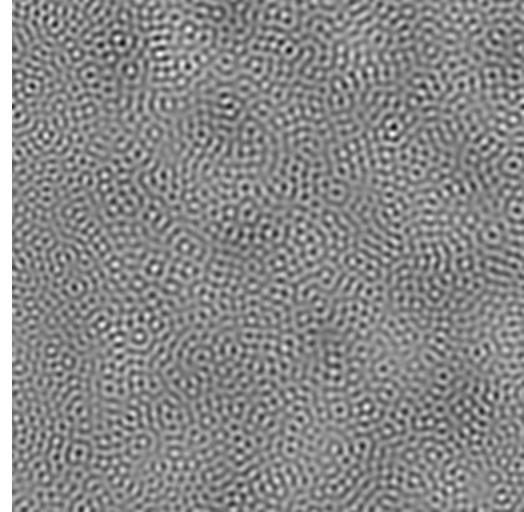


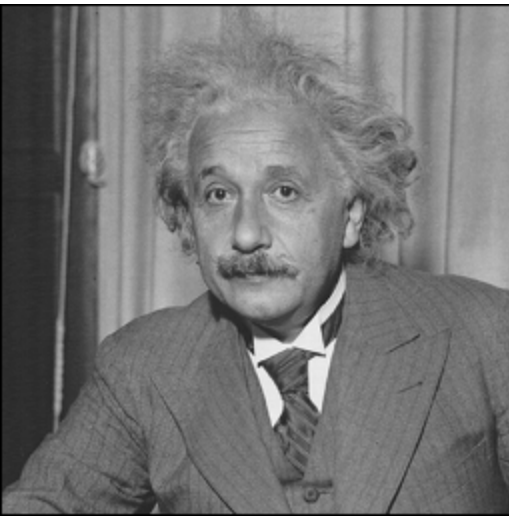
Eigendistortion[0]
range: $[-6.5e-02, 6.6e-02]$
dims: $[256, 256] * 1$



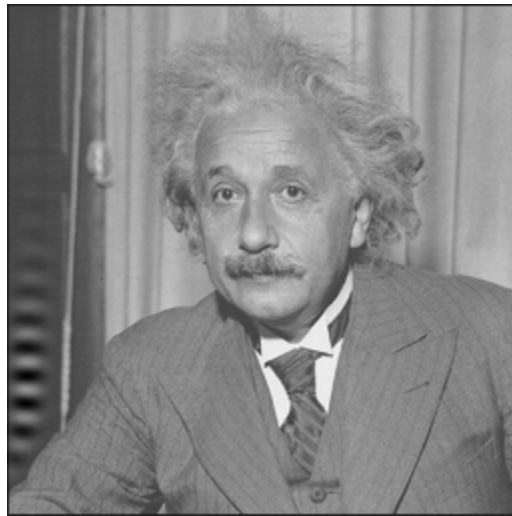
Eigendistortion[-1]
range: $[-1.7e-02, 1.6e-02]$
dims: $[256, 256] * 1$



Original image
range: $[3.9e-03, 1.0e+00]$
dims: $[256, 256] * 1$



5.0 * Eigendistortion[0]
range: $[-1.4e-01, 1.0e+00]$
dims: $[256, 256] * 1$



5.0 * Eigendistortion[-1]
range: $[-6.1e-02, 1.0e+00]$
dims: $[256, 256] * 1$

