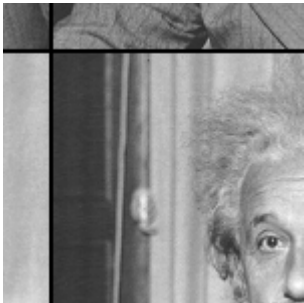
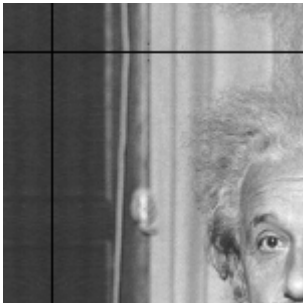


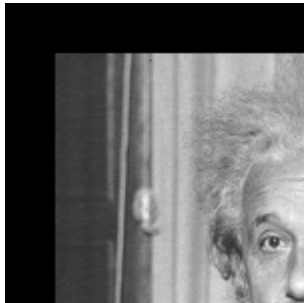
circular  
range: [3.9e-03, 8.2e-01]  
dims: [150, 150] \* 1



reflect  
range: [3.9e-03, 8.2e-01]  
dims: [150, 150] \* 1



replicate  
range: [3.9e-03, 8.2e-01]  
dims: [150, 150] \* 1



constant  
range: [0.0e+00, 8.2e-01]  
dims: [150, 150] \* 1

