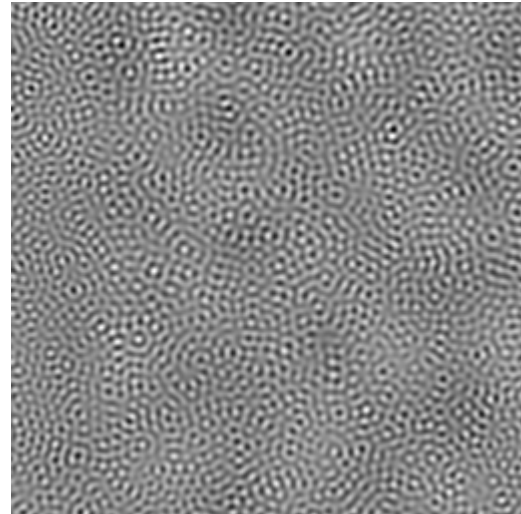


## Eigendistortions

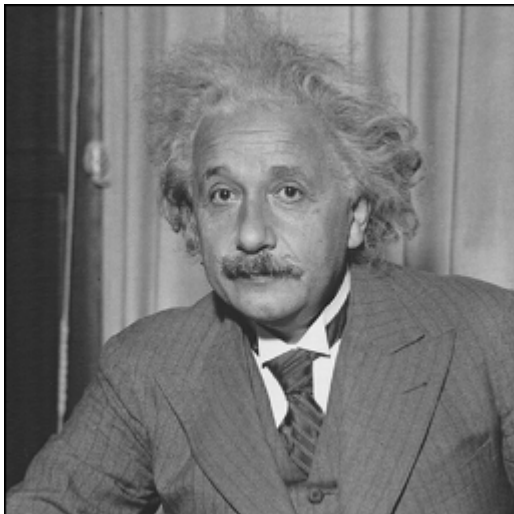
Eigendistortion[0]  
range:  $[-6.5e-02, 6.6e-02]$   
dims:  $[256, 256] * 1$



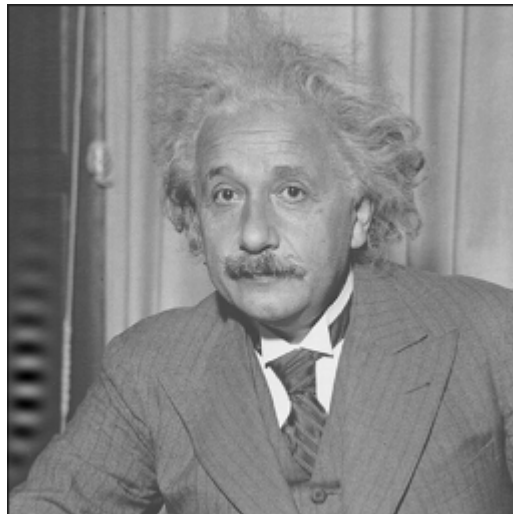
Eigendistortion[-1]  
range:  $[-1.7e-02, 1.6e-02]$   
dims:  $[256, 256] * 1$



Original image  
range:  $[3.9e-03, 1.0e+00]$   
dims:  $[256, 256] * 1$



5.0 \* Eigendistortion[0]  
range:  $[-1.4e-01, 1.0e+00]$   
dims:  $[256, 256] * 1$



5.0 \* Eigendistortion[-1]  
range:  $[-6.1e-02, 1.0e+00]$   
dims:  $[256, 256] * 1$

