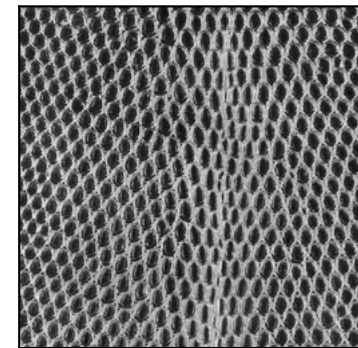
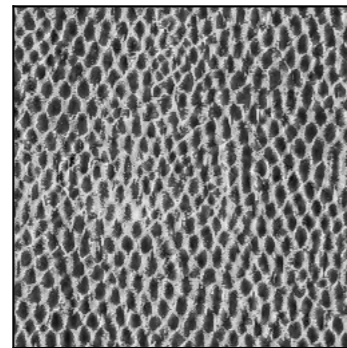


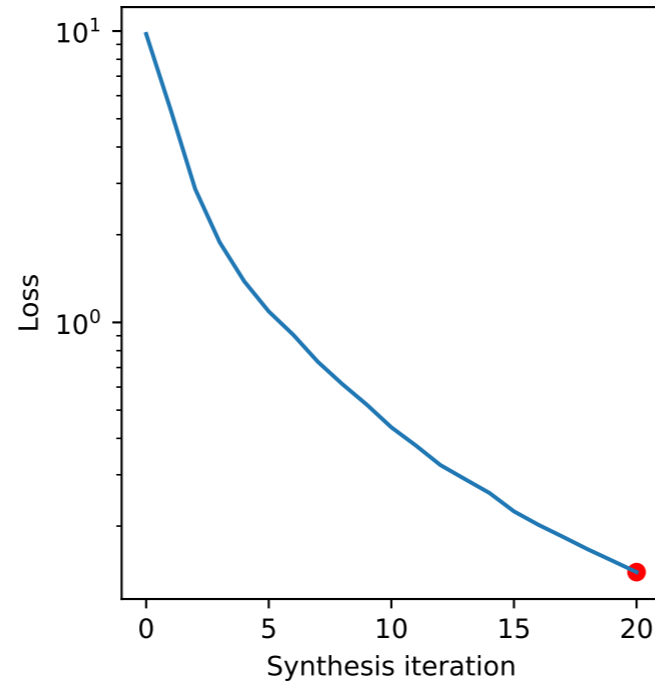
Target image
range: [0.0e+00, 1.0e+00]
dims: [256, 256] * 0.5



Metamer[0] [iteration=20]
range: [1.5e-02, 1.0e+00]
dims: [256, 256] * 0.5



Representation error



pixels+var_highpass



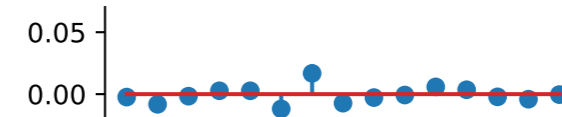
auto_correlation_reconstructed



cross_scale_correlation_magnitude



std+skew+kurtosis recon



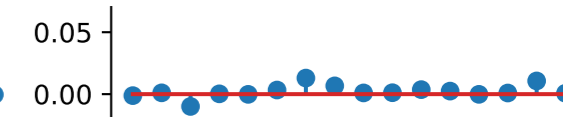
auto_correlation_magnitude



cross_scale_correlation_real



magnitude_std



cross_orientation_correlation_magnitude

